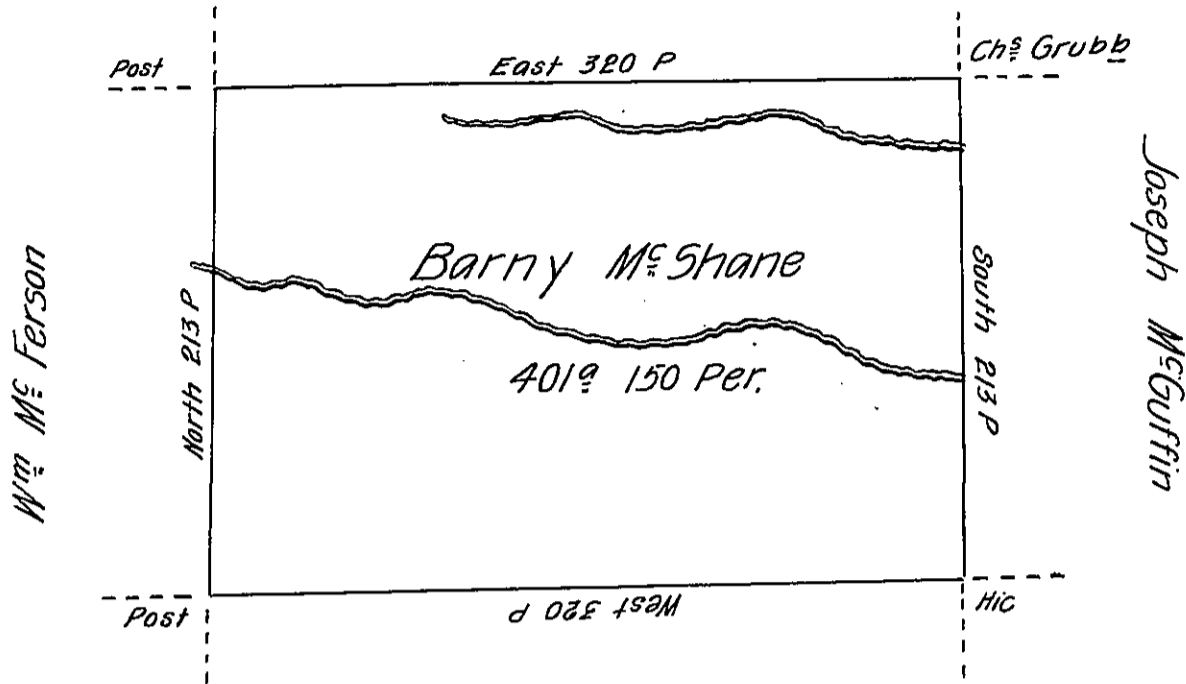


Samuel McClean



John Marshall

Situate on the West side of French Creek in Allegheny County
 Containing 401 acres & 150 Perches & allowance of six Per Cent for Roads &c.
 Surveyed the 1st day of June 1795. In Pursuance of a Warrant dated
 the 30th of May 1792.

Wm Power Dy. S^r

To Daniel Brodhead Esq^r
 Surveyor General.

IN TESTIMONY that the above is a copy of the original remaining on file in
 the Department of Internal Affairs of Pennsylvania, made
 conformably to an Act of Assembly approved the 16th day of
 February, 1833, I have hereunto set my Hand and caused
 the Seal of said Department to be affixed at Harrisburg,
 this.....second.....day of.....January.....1906

Geo. R. Brown
 Secretary of Internal Affairs.